

EP-M150 PRO

High Speed & High Precision
Metal Additive Manufacturing Equipment



EP-M150 PRO

EP-M150 PRO adopts metal powder bed selective melting MPBF™ (Metal Powder Bed Fusion) technology, single and dual-laser printing modes are optional, supporting 200 and 500W laser, which can be perfectly used for the rapid production of high performance, high-precision parts. Compatible with most popular metal powder materials, including titanium alloy, aluminum alloy, nickel-based superalloy, Maraging steel, stainless steel, Cobalt, chromium alloy and ect. It has been applied in versatile applications such as industrial manufacturing, medical, education, dental, materials development and etc.

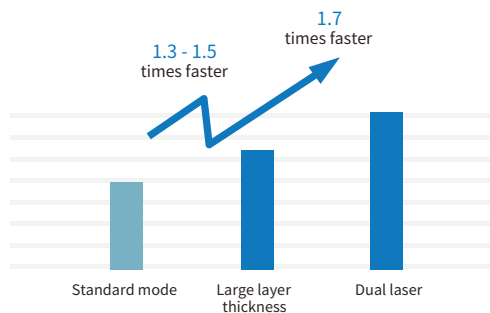


« High Precision

- High laser beam quality.
- Tiny laser spot.
- High consistency and uniform laser beam quality from different positions in the building platform.

» High Performance

- The density of printed parts can reach nearly 100 %.
- Volatility of mechanical properties < 5 %.
- In dual laser printing mode, precision deviation in alignment area ≤ 0.15 mm.



« High Efficiency

- The Layer thickness can be up to 100 μm
- With the latest upgraded technology combining dual-laser with large layer thickness mode, the productivity has been risen for 2.3 ~ 2.7 times.

» Openness

- High consistency, different machines could use the same set of process parameters.
- Machine compatible with multiple materials, the same machine can print multiple materials without adjusting the optical path.



2 minutes quick operation



One-click printing

» Affordable Operation Cost

- Air consumption during processing <math>< 3 \text{ L / min}</math> (0.3 MPa).
- Powder supply is accurate, stable and controllable, and high utilization rate of powder.
- The existing material parameter packages are provided for free.



Safety design



Anti-electric shock



Prevention of Misoperation



Fire prevention



Anti-pollution



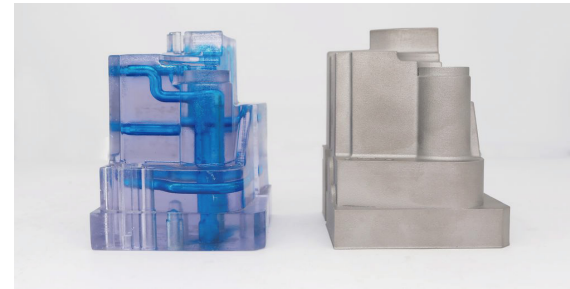
Working environment monitoring



Gas source status monitoring

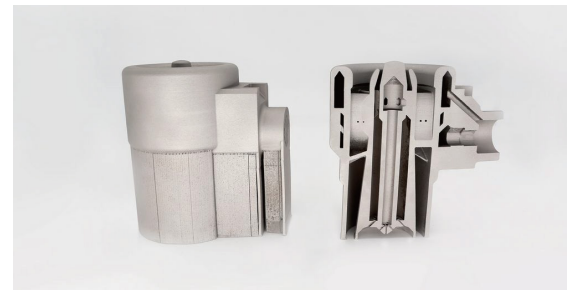


Anti-waste



« User Friendly Operation System

- Ergonomics overall design for users.
- With "one-click printing" function, each process is ready to run, click the "print" button on the screen to start printing.
- The replacement of filter element, residual material tank substrate and recoater can be completed within 2 minutes.



« Safer

- Safety design, anti-misoperation, anti-electric shock, fire prevention, anti-waste, anti-pollution.
- Real-time monitoring and traceable of working environment and gas source status, safe and reliable.

EP-M150 PRO PARAMETER

Machine Model	EP-M150 PRO
Build Chamber (XxYxZ)	Φ156mmx240mm ³
Optical System	Fiber Laser, 500W (single or dual-laser optional)
Spot Size	70μm
Max Scan Speed	8m/s
Building Speed ⁽¹⁾	Single laser : 5~20cm ³ /h Dual laser : 8~35cm ³ /h
Layer Thickness	20μm -100μm
Material	Titanium Alloy, Aluminium Alloy, Nickel Alloy, Maraging Steel, Stainless Steel, Cobalt Chrome, Copper Alloy, etc.
Power Supply	380V, 3P/N/PE, 12KW, 23A, 50~60Hz (Dual laser : 13.5KW, 28A)
Gas Supply	Ar/N ₂
Oxygen Content	≤100 ppm
Dimension (WxDxH)	2120x980x2250mm ³
Weight	1500kg
Software	EP Control, EP Hatch
Input Data Format	STL or other Convertible File

Notice: Eplus 3D reserves the right to explain any alteration of the specifications and pictures.

Distributed by



Wietech 3D LLC
California - USA
+1 (909) 261-0585
info@wietech3d.com
www.wietech3d.com